



Deep 
Charge

TRANSFORMING DEVICE MANAGEMENT IN EDUCATION

Innovative Charging and Tracking Solutions
for Schools and Universities

THE CHALLENGE IN HIGHER EDUCATION

As educational institutions increasingly integrate technology into their curricula, they encounter new challenges associated with the heavy reliance on digital devices. The widespread use of smartphones, tablets, and laptops is essential for modern teaching and learning but introduces several critical issues:

1 Insufficient Charging Facilities

As the number of devices per student grows, existing facilities often fall short in providing enough accessible charging points. Classrooms, libraries, and common areas are frequently under-equipped to handle the demand, leading to inadequate support for essential learning tools.

2 Disruption and Inconvenience

A common issue that directly impacts the quality of education is the disruption caused by devices running out of charge during critical learning activities. This not only interrupts the teaching process but also hinders students' ability to engage fully with the educational material.

3 Energy Efficiency Concerns

Educational institutions often operate within tight budget constraints, making energy efficiency a critical priority. Traditional charging solutions and outdated energy management practices can lead to significant waste and high operational costs.

4 Device Management

The logistical challenge of ensuring all devices are consistently charged and ready for use poses a significant administrative burden. Efficient management of this aspect is crucial to avoid the wastage of valuable academic time and to maintain the continuity of educational programs.

5 Security and Safety

The safety of students and faculty is paramount. Inefficient charging systems can pose fire hazards, while unsecured charging solutions could lead to theft or data breaches.

6 Sustainability Goals

Many educational institutions are committed to reducing their carbon footprint. Achieving sustainability goals requires innovative solutions that support green initiatives and reduce overall energy consumption.

7 Infrastructure Scalability

As institutions evolve, so must their infrastructure. Many campuses struggle with adapting their existing charging and energy systems to accommodate growth without extensive and costly overhauls.



These challenges necessitate a sophisticated solution that can seamlessly integrate into educational environments to enhance learning experiences through reliable, efficient, and accessible charging solutions. DeepCharge aims to address these pain points with advanced, AI-driven energy management and charging systems tailored specifically for the needs of educational institutions.





DEEPCHARGE'S SOLUTION OVERVIEW

DeepCharge offers a suite of cutting-edge charging and energy management solutions designed specifically to meet the demands of higher education environments. Our products provide reliable, efficient, and smart energy solutions that are essential for campuses looking to modernize their infrastructure and support an increasingly digital learning landscape.



Deep ⚡
Charge



DEEPCHARGE'S SOLUTION OVERVIEW

Smart Charging Stations

Deployed in classrooms, libraries, and common areas, these stations are equipped with AI technology that intelligently manages power distribution, ensuring quick and efficient charging for all students and staff across various educational institutions.

High-Volume Charging

Each station has the capacity to wirelessly charge over 300 devices simultaneously, ensuring that no student or staff member ever faces the inconvenience of a dead battery.

Wireless Convenience

Eliminate the clutter and hazards of cords. Our stations provide a clean and efficient charging experience, making classrooms and libraries safer and more organized.

Fast Charging Capabilities

Equipped with the latest fast charging technology, our stations reduce downtime by rapidly recharging devices, supporting the continuous use of technology throughout the educational process.

Energy Management Software

Our sophisticated platform monitors and manages energy usage in real-time, offering actionable insights that enable facilities managers to optimize power consumption, reduce waste, and achieve sustainability goals.

Mobile App Integration

A user-friendly app that allows students and faculty to effortlessly locate and reserve available charging stations and receive notifications when their devices are fully charged.



DEEPCHARGE'S PRODUCT LINEUP



DC Array

Perfect for high-traffic areas, offering high-density charging capabilities.



DC Rack

Provides secure, robust charging for faculty and staff devices in tech labs and IT departments.



DC Cart

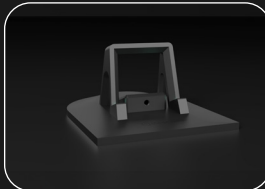
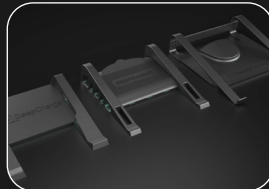
Mobile and versatile, ideal for supporting device charging in classrooms and lecture halls.



EnergyTiles

Innovative charging tiles that can be installed under tables in student lounges or faculty rooms.

Accessories



Supports a diverse range of devices with various connectors and charging cables. Our plug-and-play tag with USB-C output can convert any non-wireless charging device, such as tablets, to wireless charging and tracking.

THE DEEPCHARGE ADVANTAGE:

Scalable Solutions

Easily integrates with existing infrastructure and scales to meet growing campus needs.

Enhanced Sustainability

Easily integrates with existing infrastructure and scales to meet growing campus needs.

Optimized Operational Efficiency

AI-driven analytics and smart management features streamline campus operations, boost productivity, and reduce costs.



KEY BENEFITS FOR STAKEHOLDERS AND USERS

DeepCharge's innovative charging solutions bring substantial benefits to all members of the educational community, enhancing the overall educational experience by ensuring high availability and optimal functionality of electronic devices. Here's how different stakeholders benefit:



For Students:

- **Constant Access to Charged Devices:** Ensures uninterrupted access to learning tools, helping students stay engaged without the disruption of device power issues.
- **Enhanced Learning Experience:** Reduces the stress associated with low battery notifications, allowing students to focus on academic achievements.



For Faculty and Staff:

- **Seamless Teaching Experience:** Faculty can rely on having their teaching devices fully charged and ready, facilitating smoother presentations and interactive learning sessions.
- **Easy Device Management:** Simplifies the logistics of device preparedness, ensuring all educational technology is operational when needed.



For IT and Facilities Management:

- **Advanced Device and Energy Management:** DeepCharge provides detailed analytics on device usage and energy consumption, enabling precise control and optimization of resources.
- **Operational Efficiency:** Streamlines the maintenance and charging processes, reducing manual oversight and allowing IT staff to allocate their time to more critical tasks.
- **Reduced Cable Clutter:** Wireless charging solutions declutter learning spaces, minimizing maintenance issues and enhancing safety.



For the Institution:

- **Boosted Operations and Productivity:** Integrating smart charging solutions aids in the smooth operation of campus activities, significantly enhancing overall institutional productivity.
- **Cost Reduction:** By optimizing energy use and reducing the reliance on multiple charging adapters and solutions, DeepCharge helps cut down long-term operational costs.
- **Modernized Infrastructure:** Showcases the institution's commitment to adopting next-generation technology, improving its appeal to prospective students and faculty.
- **Sustainability Impact:** Supports environmental goals through efficient energy management, contributing to the institution's sustainability initiatives.

By enhancing the infrastructure with DeepCharge, educational institutions can achieve a higher level of operational efficiency, better resource management, and an improved learning environment. This holistic improvement in operations and educational support makes DeepCharge an invaluable partner in the advancement of educational facilities.





USE CASE APPLICATIONS AND STAKEHOLDER BENEFITS

DeepCharge enhances various areas of campus life by providing tailored charging solutions that meet the unique needs of each location within an educational institution. Below are specific use cases and the benefits they bring to students, faculty, and staff.

Location	Use Case	Stakeholder Benefits
Classrooms	Allows students and teachers to charge devices during classes, ensuring continuous access to digital learning tools.	Enhances the learning experience; supports tech-integrated education.
Libraries	Provides charging stations for students using devices for research and study, ensuring uninterrupted learning.	Improves study environment; encourages longer library usage.
Student Lounges	Offers a convenient charging spot for students during breaks or between classes.	Increases student satisfaction; ensures students stay connected.
Tech Labs	Ensures all tech devices used for practical learning are charged and ready for student use.	Facilitates hands-on learning; improves lab efficiency.
Administrative Offices	Keeps staff devices charged for operational efficiency and communication.	Streamlines administrative tasks; enhances workplace productivity.
Faculty Rooms	Provides faculty with a reliable charging solution for their teaching devices and personal phones.	Supports faculty in managing digital teaching tools; reduces disruptions.



Classrooms:

In digitally enhanced classrooms, the presence of readily available charging stations allows for a seamless learning experience where neither students nor teachers need to worry about device battery life, maintaining the flow of teaching and interaction.

Libraries:

With DeepCharge stations, students engaged in long hours of study or research have their devices consistently powered, which facilitates prolonged access to digital libraries and online resources.

Student Lounges:

Charging stations in lounges not only cater to the downtime needs of students but also enhance campus life by keeping students connected to both social media and educational content.

Tech Labs:

Labs equipped with DeepCharge solutions ensure that all devices are ready for use, making tech-based experiments and learning sessions more effective and productive.

Administrative Offices:

Ensuring that all administrative staff have continuously charged devices means that campus operations are smooth and efficient, with reduced downtime and increased responsiveness to student and faculty needs.

Faculty Rooms:

Dedicated charging solutions in faculty rooms provide convenience and reliability, ensuring that all educational and communication tools are fully charged and ready to go at a moment's notice.

IMPLEMENTATION PROCESS

Implementing DeepCharge solutions on your campus is designed to be seamless and efficient. Here's the refined process including a pilot option:

1. Initial Consultation

Engage with our team to discuss your specific needs and challenges. We will assess your campus facilities to understand the optimal strategy for integration.

2. Customized Planning

We develop a tailored plan that includes the selection of appropriate charging solutions and strategic placement around the campus.

3. Pilot Implementation

Before a full rollout, we offer a pilot program where we install DeepCharge systems in a selected area of your campus. This allows your institution to evaluate the benefits and functionality of our solutions in real-time, ensuring they meet your expectations.

4. Full-Scale Installation

After a successful pilot and your approval, our certified technicians will proceed with a campus-wide installation during off-peak hours to minimize disruption.

5. Testing and Quality Assurance

Comprehensive testing is conducted to ensure that all systems are fully operational and meet our high standards of quality.

6. Training and Onboarding

We provide detailed training for IT staff, facilities managers, and end-users to ensure smooth operation and maintenance of the systems.

7. Ongoing Support

Post-installation, DeepCharge commits to ongoing support and maintenance, ensuring that your charging infrastructure is always up to date and performing optimally.

Deep ⚡
Charge

CALL TO ACTION

Transform your campus with DeepCharge's innovative solutions. Start with a low-risk pilot to see the benefits firsthand:

Contact Us:

For a free consultation and to discuss the pilot program details, visit www.deepcharge.io or email us at sales@deepcharge.io.

Schedule a Demo:

Witness the effectiveness of our technology during a live demonstration tailored to your institution's needs

Learn More:

Join our webinars for insights into smart charging infrastructure and AI-powered energy management.

Start your journey towards a smarter, more sustainable campus today with DeepCharge. We're ready to guide you from initial consultation through to a full-scale implementation and beyond.

CONNECT WITH DEEPCHARGE

Empowering Education with Advanced Charging Solutions

Discover how DeepCharge can transform your campus with state-of-the-art charging technology and AI-driven energy management. Let's create a more connected, efficient, and sustainable future together.



Contact Us:

- Email: sales@deepcharge.io
- Website: sales@deepcharge.io

Follow Us for Updates and Insights:

- LinkedIn: company/deepcharge
- X: @DeepChargeTech
- Facebook: deepcharge.io





POWERING TOMORROW'S EDUCATION

Join our journey and lead the change in educational technology management. Contact us today for a consultation or to schedule a demonstration.

